



Office 365 SharePoint Assessment: Prerequisites and Configuration



This document explains the required steps to configure the Office 365 SharePoint Assessment included with your Azure Log Analytics Workspace and Microsoft Unified Support Solution Pack.

! Important: There are configuration and setup tasks to be completed prior to executing the assessment setup tasks in this document. For all prework, follow the [Assessment Setup Guide](#) from the Services Hub Resource Center.

Contents

System Requirements and Configuration at Glance.....	3
Supported Versions	3
Account Requirements	3
Data Collection Machine Requirement	3
Setup Microsoft Assessment Azure AD Application	4
With the enabled MFA account	4
With the disabled MFA account	12
Setting permission to show Classic Workflows (if workflow report is required)	15
Install Prerequisite Cmdlets	21
Setting up the SharePoint Online Assessment	21
Appendix	25
Data Collection Methods	25
Microsoft Graph API	25
Microsoft PowerShell	25
SharePoint Modernization Scanner	25
Office 365 Assessment – Authentication Model	26
Graph API	26
PowerShell Cmdlets	26
SharePoint Modernization Scanner	27
View Prerequisite Errors	27

System Requirements and Configuration at Glance

Supported Versions

- Office 365 SharePoint Online

Account Requirements

- User account rights:
 - Global Administrator for Office 365
 - Federated Accounts are not supported
 - MFA is supported
 - Local Admin account or Domain account with Local Admin rights for Task setup

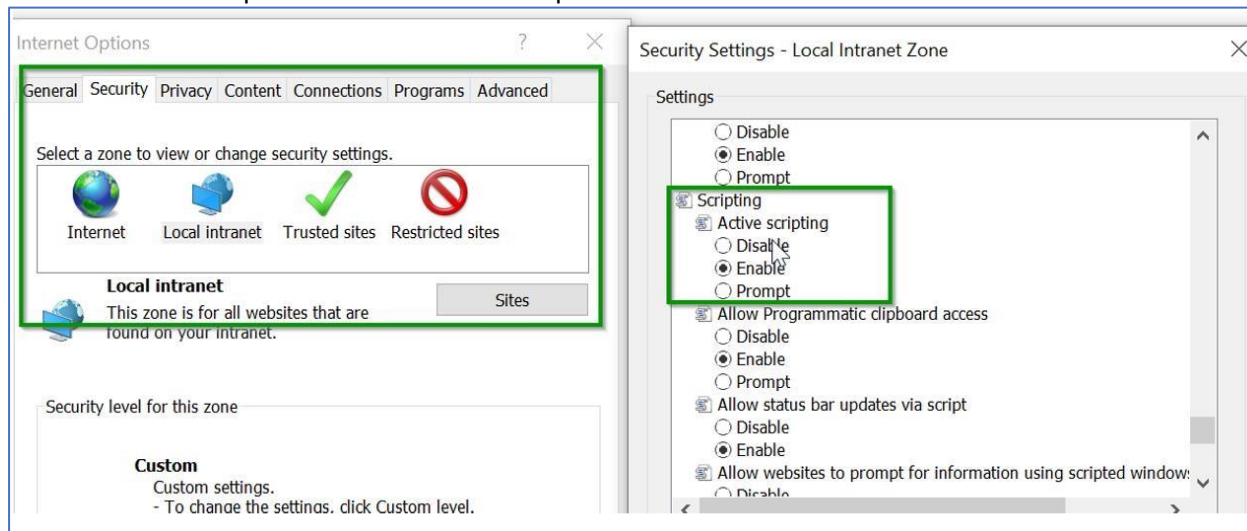
Data Collection Machine Requirements

- Data collection machine hardware: Minimum 16 gigabytes (GB) of RAM, 2 gigahertz (GHz) dual-core processor, minimum 2 GB of free disk space.
 - High End Workstation: Windows 10 – 64bit only
 - Server: Windows Server 2022, Windows Server 2016 – 64bit only
 - PowerShell version: 5.0 or greater
 - Depending on the size and complexity of your environment, you will need to increase the total amount of RAM to ensure that the data collection is successful and completes in a timely manner.
- Microsoft .NET Framework 4.8 or newer installed
 - Download from: [Download .NET Framework 4.8 | Free official downloads \(microsoft.com\)](#)
- Data collection machine can be a standalone or domain joined machine.
- The data collection machine must be able to connect to the Internet using HTTPS to connect to the Office 365 tenant.
- **Antivirus** and any other type of **Security software** need to be configured to exclude Assessment related files, file types, working directory folders and process (Omsassessment.exe) to avoid process termination, blockage and alerts. [Add an exclusion to Windows Security](#)

Setup Microsoft Assessment Azure AD Application

Note: While executing `New-MicrosoftAssessmentsApplication` command, you may need to enable the following settings to for the Authentication popup prompt.

1. Go to Internet options and Enable JavaScript:



2. Add your SharePoint Online admin center URL to the trusted sites e.g. <https://tenantnameadmin.sharepoint.com> or <https://admin.tenantname.com> if friendly admin URL configured

With the enabled MFA account

1. Open PowerShell as an Administrator and then run the following on the Data Collection Machine.
New-MicrosoftAssessmentsApplication
This script will run and then prompt for Global Administrator Credentials
2. Type "Y" to install package.

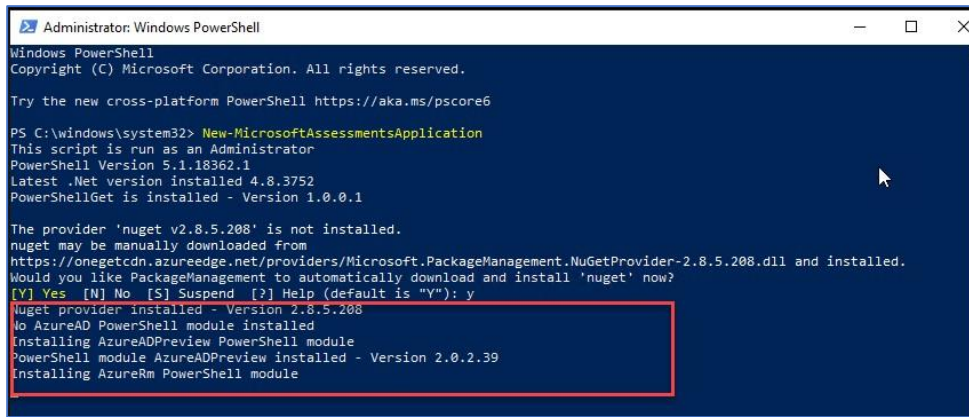
```
Administrator: Windows PowerShell
Windows PowerShell
Copyright (C) Microsoft Corporation. All rights reserved.

Try the new cross-platform PowerShell https://aka.ms/pscore6

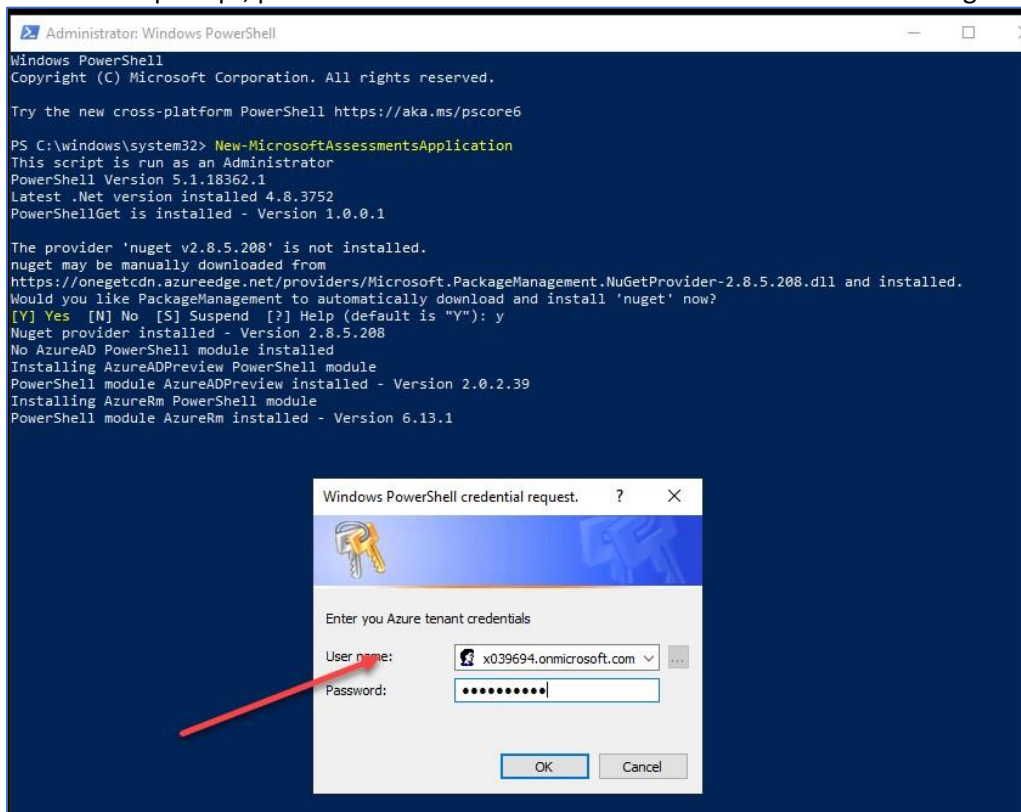
PS C:\windows\system32> New-MicrosoftAssessmentsApplication
This script is run as an Administrator
PowerShell Version 5.1.18362.1
Latest .Net version installed 4.8.3752
PowerShellGet is installed - Version 1.0.0.1

The provider 'nuget v2.8.5.208' is not installed.
nuget may be manually downloaded from
https://onegetcdn.azureedge.net/providers/Microsoft.PackageManagement.NuGetProvider-2.8.5.208.dll and installed.
Would you like PackageManagement to automatically download and install 'nuget' now?
[Y] Yes [N] No [S] Suspend [?] Help (default is "Y"):
```

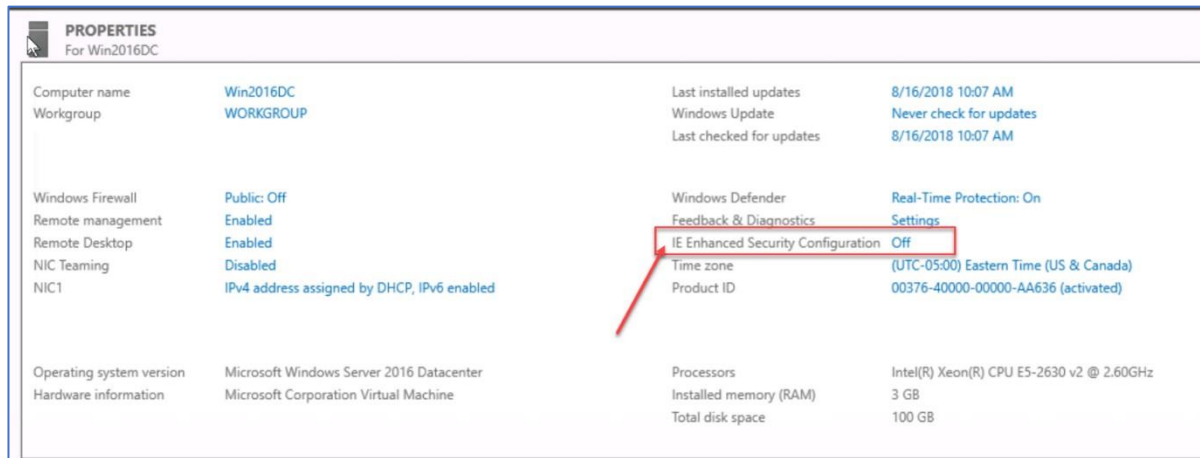
This will install the AzureAD Preview Module



3. At the credential prompt, please enter an account with Global Administrator access rights.

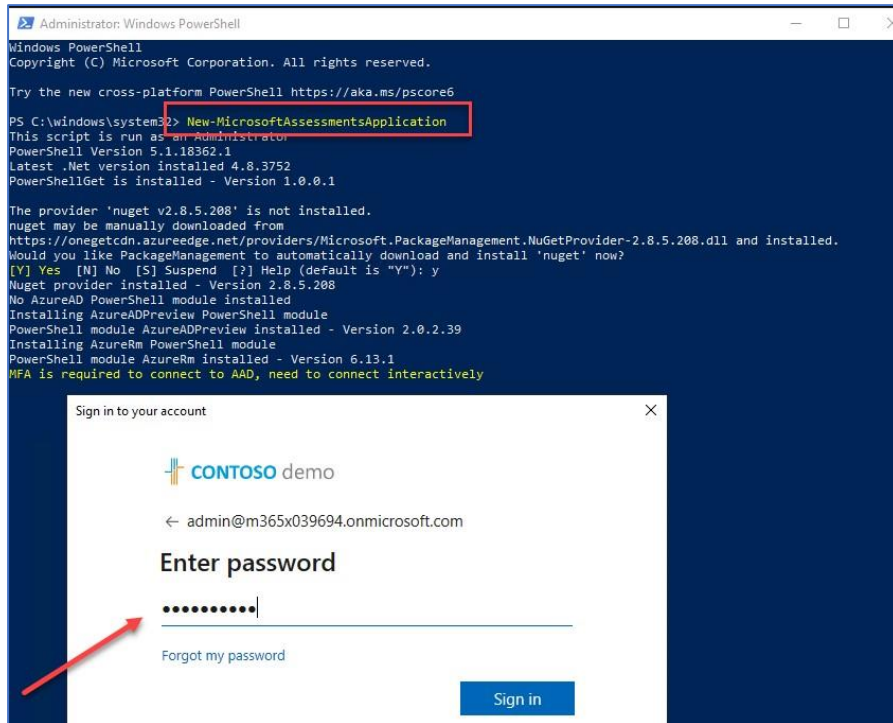
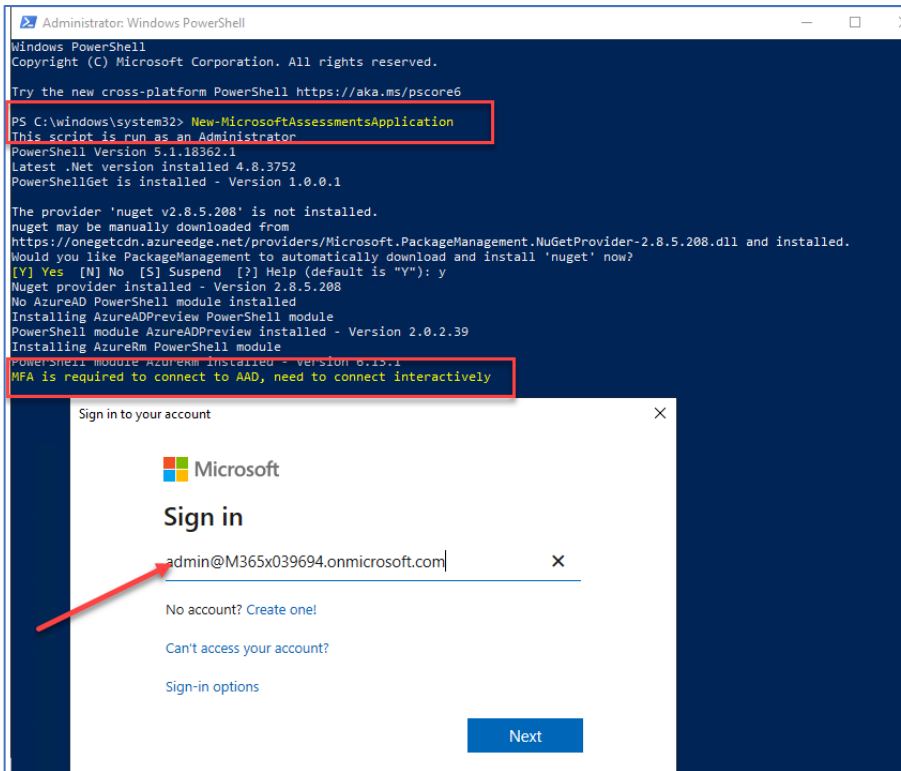


4. PS: for Windows Server 20** , you may be needed to disable IE Enhanced Security



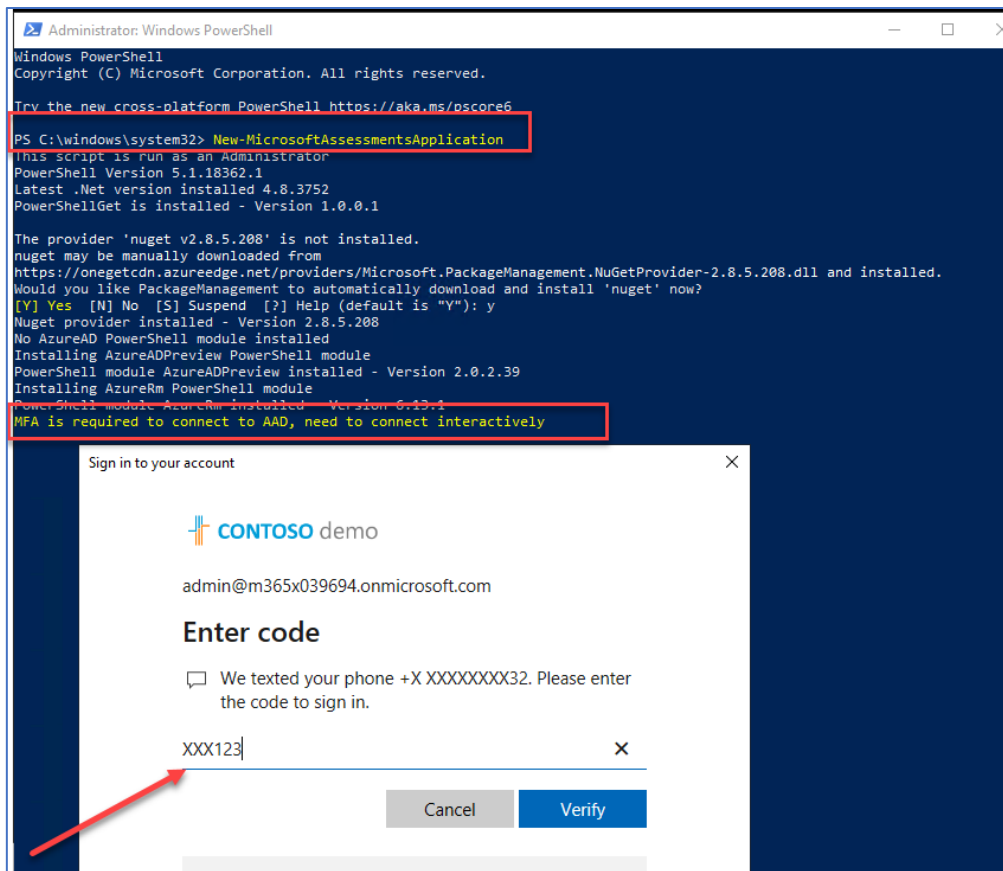
5. You will be prompted to Logging, please use the Global Administrator Account, Password and MFA Code

6. You will be prompted so Sign-in again after the MFA Requirement message. Use the Global Admin credentials and MFA code



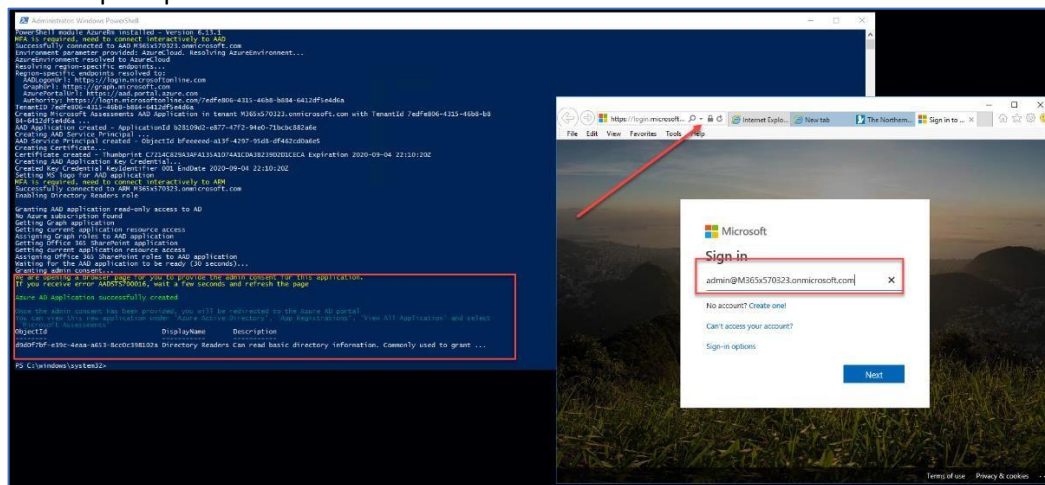
7. Enter your MFA code

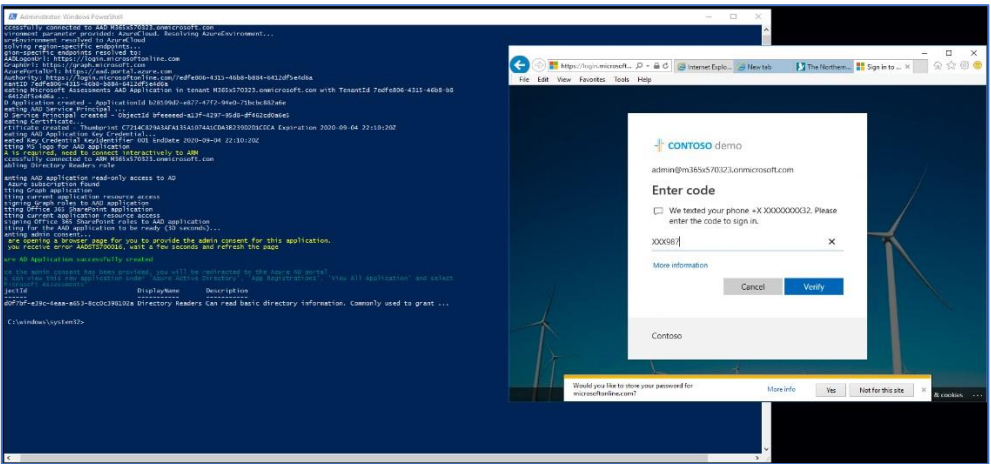
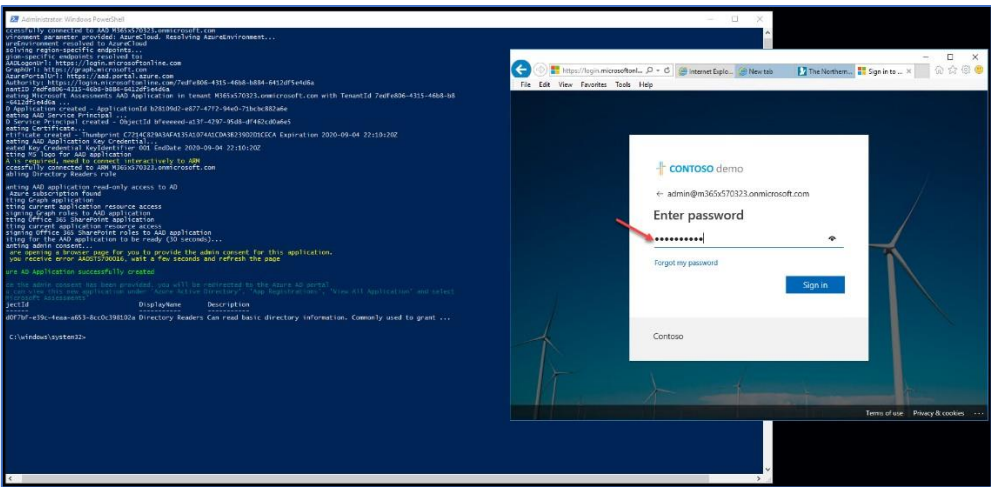
8. You will be prompted to logging again with your GA account, Password and MFA Code



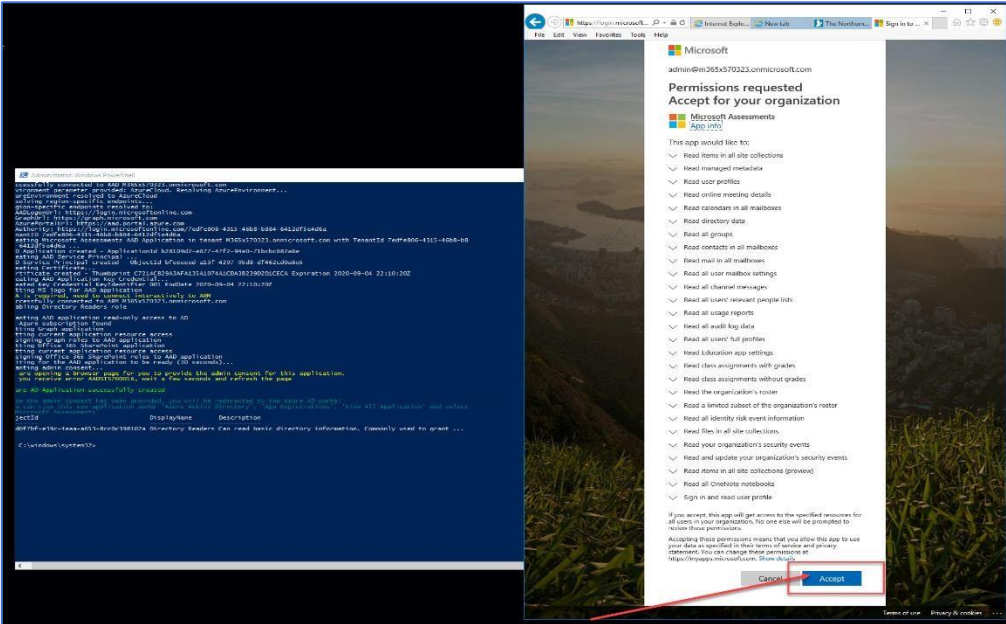
9. After the successful creation of the Azure Application, a browser will be launch and you will be prompted to logging again with your Global Admin Account, Password and MFA Code,

PS: All prompts will be in the browser.

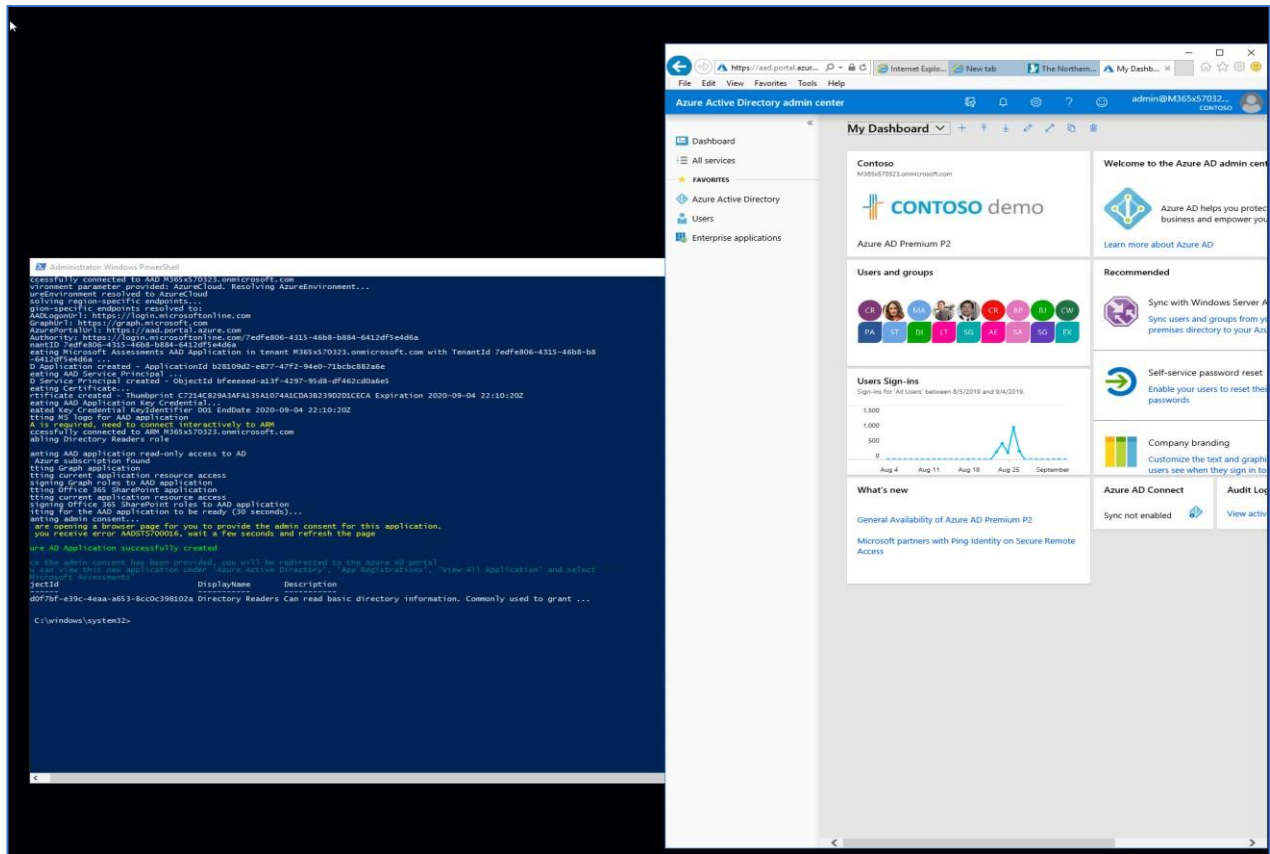




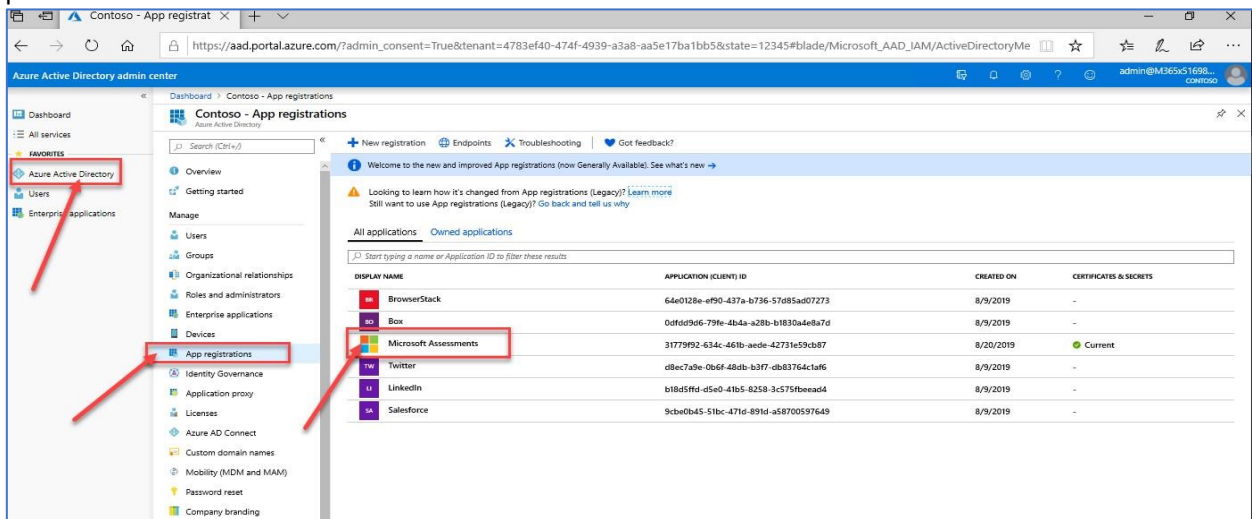
10. You will be prompted to accept the permission request



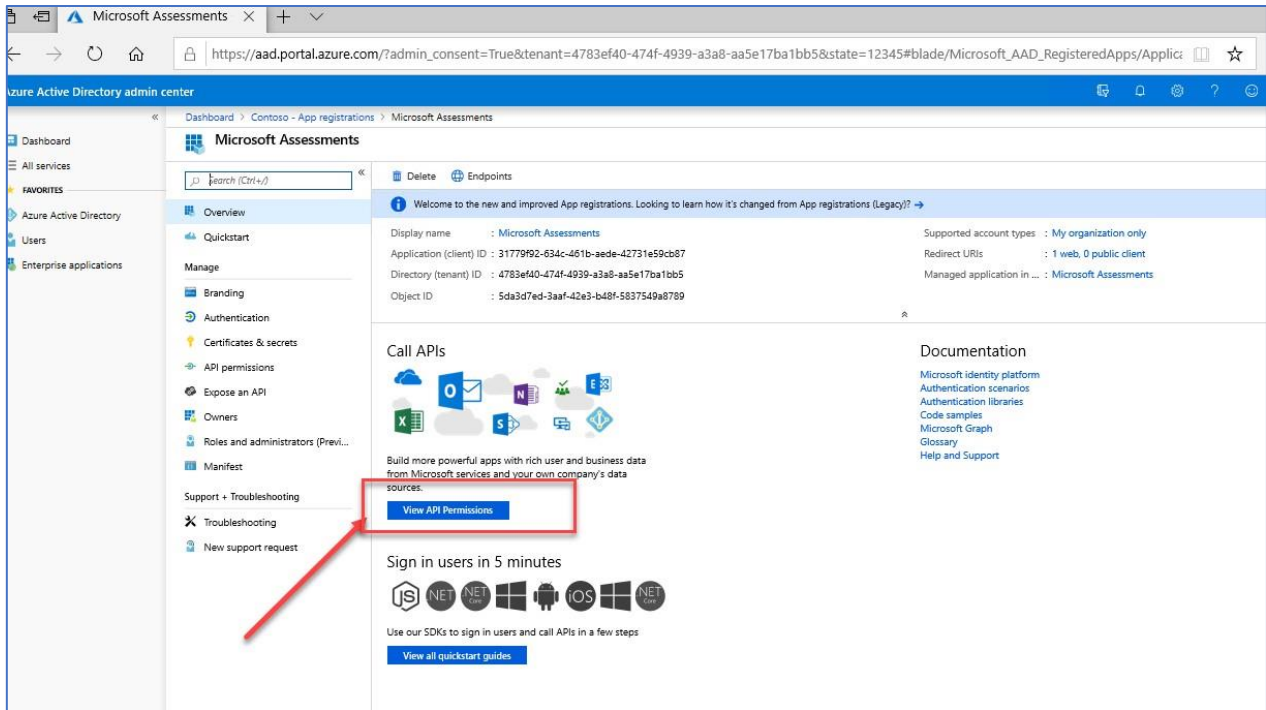
11. And you be logging into your Azure Environment.



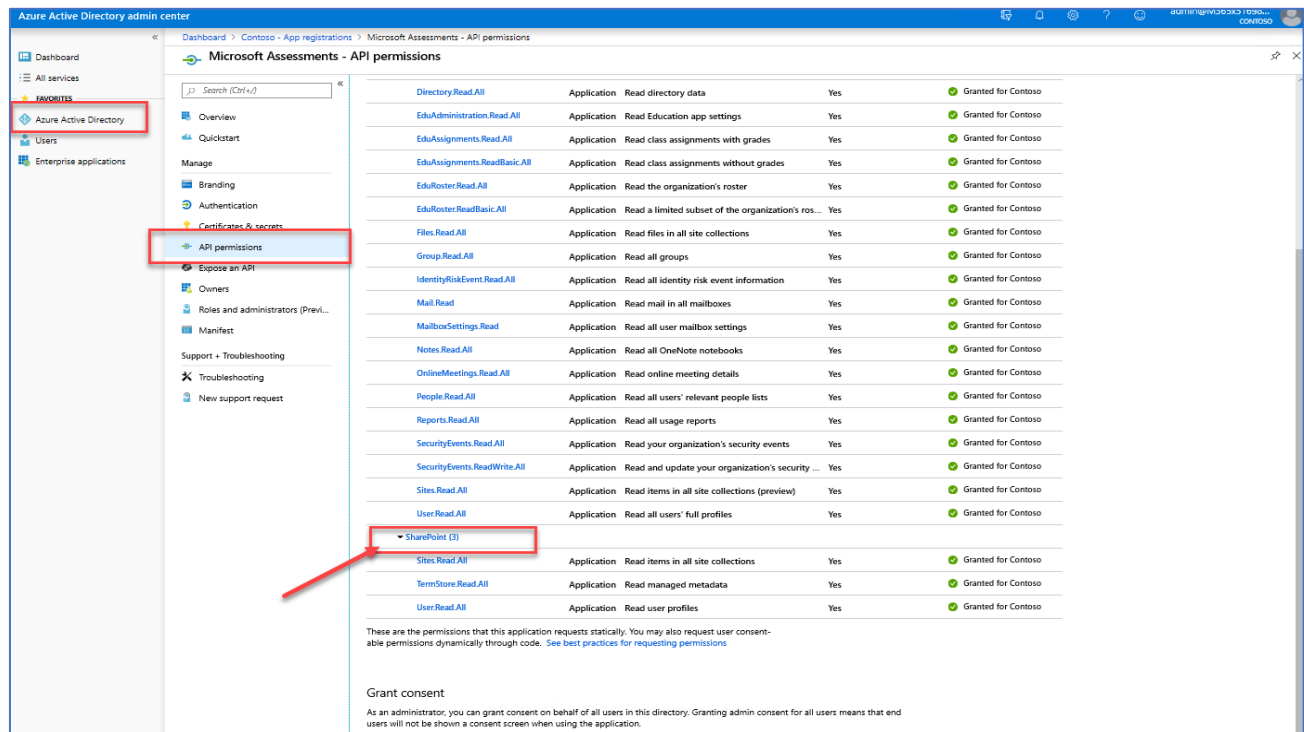
12. In Azure Select “Azure Active Directory” ⑦ “App Registrations” ⑦ and confirm the “Microsoft Assessments” app is present



13. Click on the Microsoft Assessment Application to open it and click on “View API Permissions”



14. Confirm the SharePoint App Permissions section was also created.



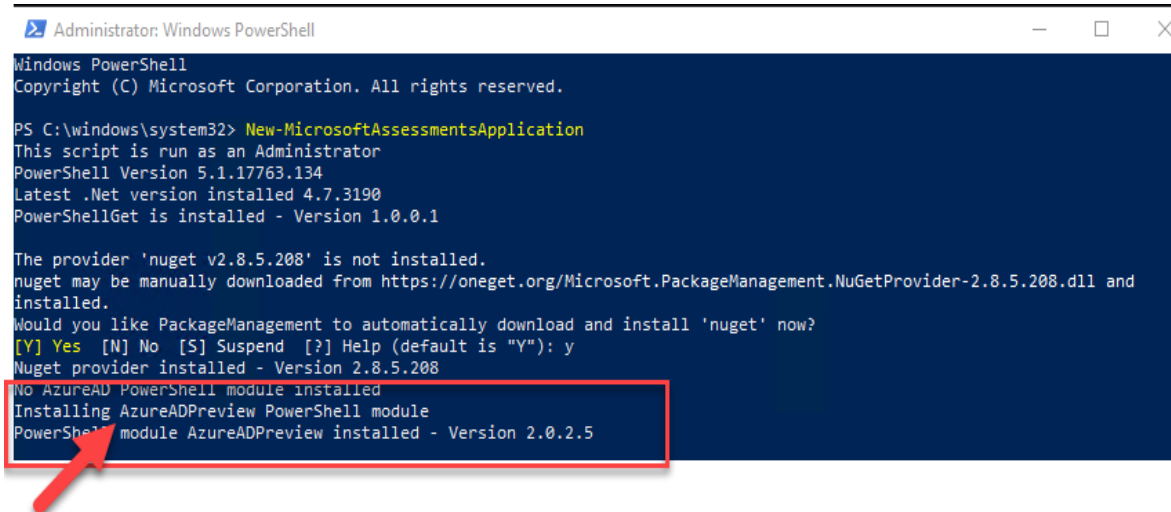
With the disabled MFA account

1. Open PowerShell as an Administrator and then run the following on the Data Collection Machine.

New-MicrosoftAssessmentsApplication

This script will run and then prompt for Global Administrator Credentials:

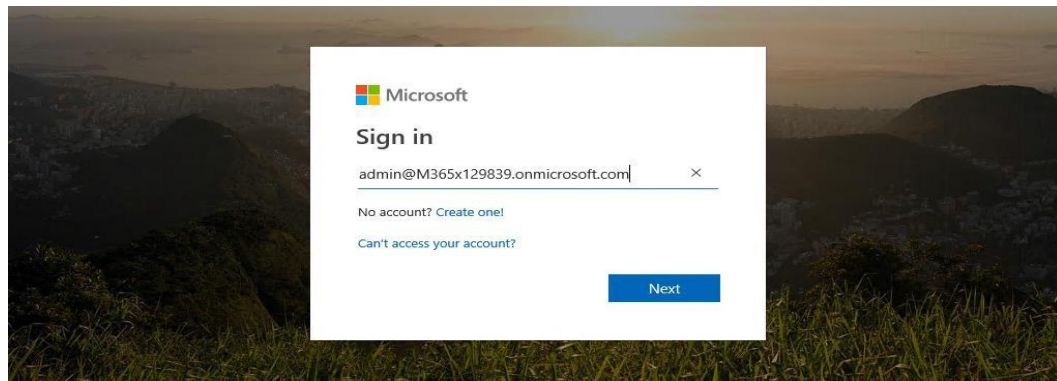
2. Type "Y" to install package. PS: This command will install the AzureADPreview module. **If it doesn't get installed as part of this step, make sure you install the Azure AD Preview Module.**



```
Administrator: Windows PowerShell
Windows PowerShell
Copyright (C) Microsoft Corporation. All rights reserved.

PS C:\windows\system32> New-MicrosoftAssessmentsApplication
This script is run as an Administrator
PowerShell Version 5.1.17763.134
Latest .Net version installed 4.7.3190
PowerShellGet is installed - Version 1.0.0.1

The provider 'nuget v2.8.5.208' is not installed.
nuget may be manually downloaded from https://oneget.org/Microsoft.PackageManagement.NuGetProvider-2.8.5.208.dll and
installed.
Would you like PackageManagement to automatically download and install 'nuget' now?
[Y] Yes [N] No [S] Suspend [?] Help (default is "Y"): y
Nuget provider installed - Version 2.8.5.208
No AzureAD PowerShell module installed
Installing AzureADPreview PowerShell module
PowerShell module AzureADPreview installed - Version 2.0.2.5
```



3. Once credentials have been setup, a browser will open that will ask for **Read** access to several objects, check the access requests, and then click **Accept**.

```
Administrator: Windows PowerShell
Copyright (C) Microsoft Corporation. All rights reserved.

PS C:\windows\system32> New-MicrosoftAssessmentsApplication
This script is run as an Administrator
PowerShell Version 5.1.17763.134
Latest .Net version installed 4.7.3190
PowerShellGet is installed - Version 1.0.0.1

The provider 'nuget v2.8.5.208' is not installed.
nuget may be manually downloaded from https://oneget.org/Microsoft.PackageManagement.NuGetProvider-2.8.5.208.dll and
installed.
Would you like PackageManagement to automatically download and install 'nuget' now?
[Y] Yes [N] No [S] Suspend [?] Help (default is "Y"): y
Nuget provider installed - Version 2.8.5.208
No AzureAD PowerShell module installed
Installing AzureADPreview PowerShell module
PowerShell module AzureADPreview installed - Version 2.0.2.5
Successfully connected to M365x129839.onmicrosoft.com
TenantID d76f18c8-1589-4dd0-929b-dac4fa514257
Creating Microsoft Assessments AAD Application in tenant M365x129839.onmicrosoft.com with TenantId d76f18c8-1589-4dd0-9
9b-dac4fa514257 ...
AAD Application created - ApplicationId 9c85b37d-2bca-467f-9414-6ac2e178bc0b
Creating AAD Service Principal ...
AAD Service Principal created - ObjectID 7859df79-885f-46c7-a864-bdb93ee70e74
Creating Certificate...
Certificate created - Thumbprint 73FFB1008337FA301CEF971F76541C02A109AAF8 Expiration 2020-03-23 18:51:57Z
Creating AAD Application Key Credential...
Created Key Credential KeyIdentifier 001 EndDate 2020-03-23 18:51:57Z
Setting MS logo for AAD application
Enabling Directory Readers role

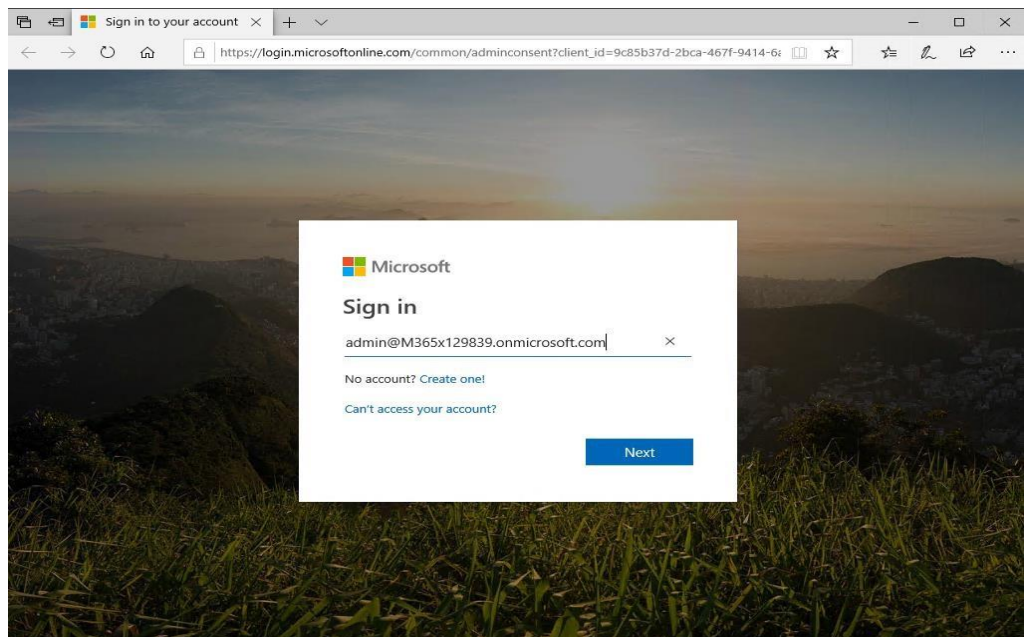
Granting AAD application read-only access to AD
Getting Graph application
Assigning Graph roles to AAD application
Waiting for the AAD application to be ready (30 seconds)...
Granting admin consent...
We are opening a browser page for you to provide the admin consent for this application.
If you receive error AADSTS700016, wait a few seconds and refresh the page

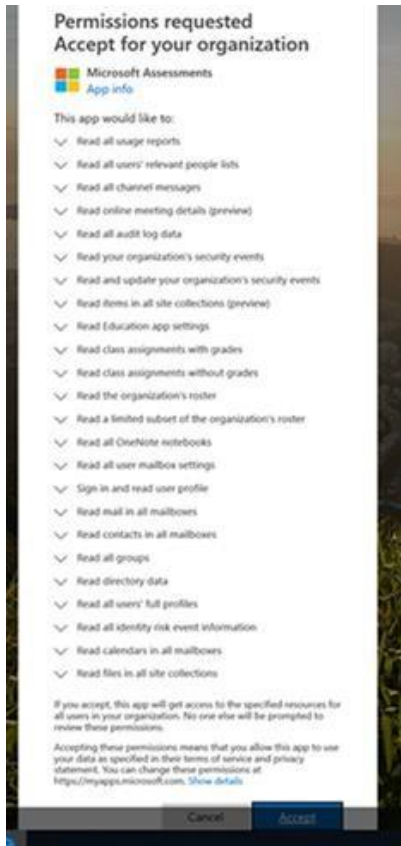
Azure AD Application successfully created

Once the admin consent has been provided, you will be redirected to the Azure AD portal
You can view this new application under 'Azure Active Directory', 'App Registrations', 'View All Application' and select
'Microsoft Assessments'

```

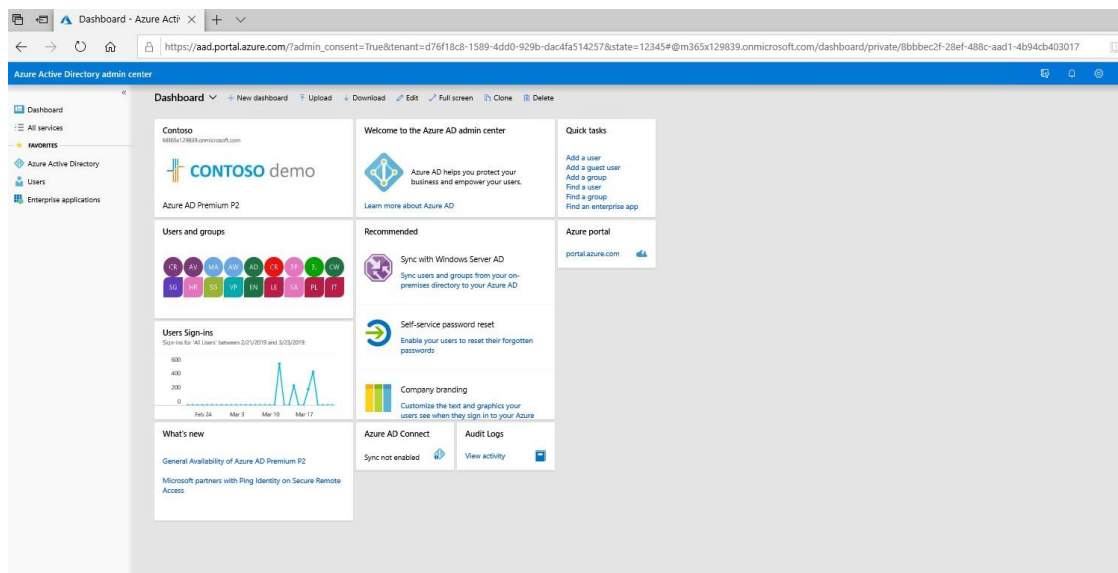
ObjectId	DisplayName	Description
ebc96ald-ad61-4348-88e6-1936a68eb9ef	Directory Readers	Can read basic directory information. For granting access to ...



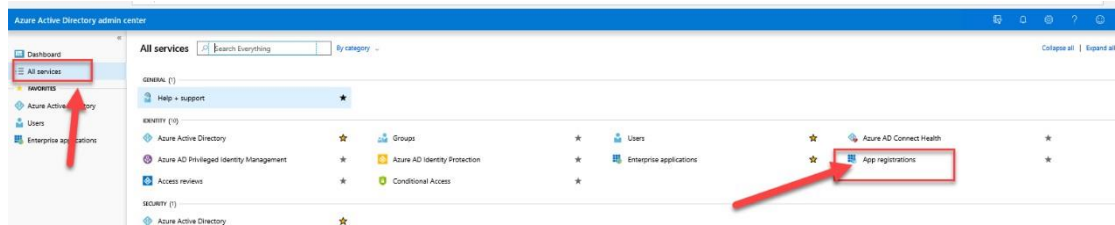


4. Now that the App has been setup. After you click on “Accept” the Azure Portal will open.

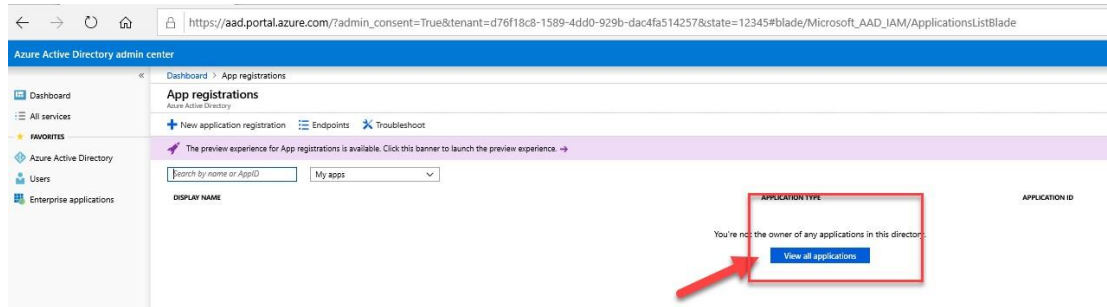
5. In the Azure Portal navigate to **Azure Active Directory** on the left navigation



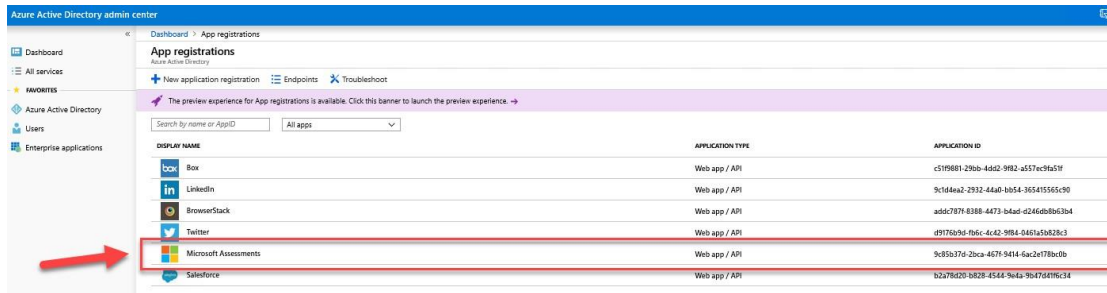
6. Click on “All Services” 📄 “App Registration”



7. Click on “View All Applications”

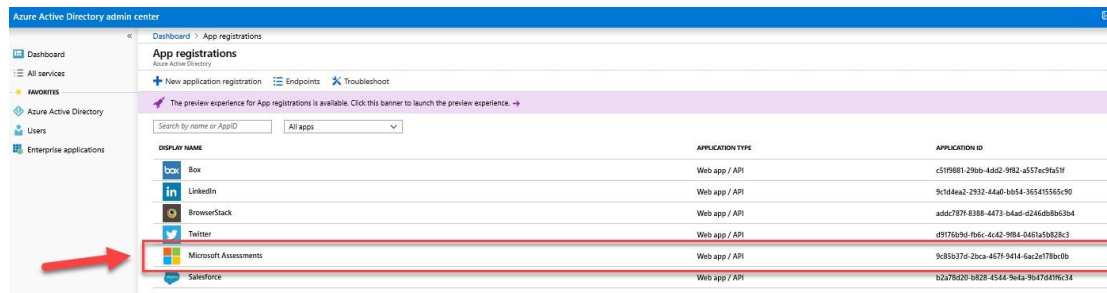


8. The new Microsoft Assessment Application will be listed



Setting permission to show Classic Workflows (if workflow report is required)

1. On the Azure portal, select **[Azure Active Directory] > [App Registrations]** and confirm the “Microsoft Assessments” app is present on the right pane.



2. Click on the **Microsoft Assessment** Application to open it and click on “View API Permissions”.

Microsoft Assessments

Search (Ctrl+/) <<

Delete Endpoints

Overview

Quickstart

Integration assistant (preview)

Manage

Branding

Authentication

Certificates & secrets

Token configuration

API permissions

Expose an API

Owners

Roles and administrators (Preview...)

Manifest

Support + Troubleshooting

Troubleshooting

Display name : [Microsoft Assessments](#)

Application (client) ID : 37eafab7-52e8-4a36-831d-476be9692ff8

Directory (tenant) ID : d653437e-8de6-4fcd-bf06-3a43e3d99ee4

Object ID : 480b610d-63eb-49ff-af62-5750847b2ba3

Welcome to the new and improved App registrations. Looking to learn how it's changed f

Call APIs



Build more powerful apps with rich user and business data from Microsoft services and your own company's data sources.

[View API permissions](#)

- Under configured permissions in the middle of the page, click on **"Add a permission"** button, on the right pane select **"SharePoint"** under the Microsoft APIs tab.

Microsoft Assessments | API permissions

Search (Ctrl+/) <<

Refresh

Overview

Quickstart

Integration assistant (preview)

Manage

Branding

Authentication

Certificates & secrets

Token configuration

API permissions

Expose an API

Owners

Roles and administrators (Preview)

Manifest

Support + Troubleshooting

Troubleshooting

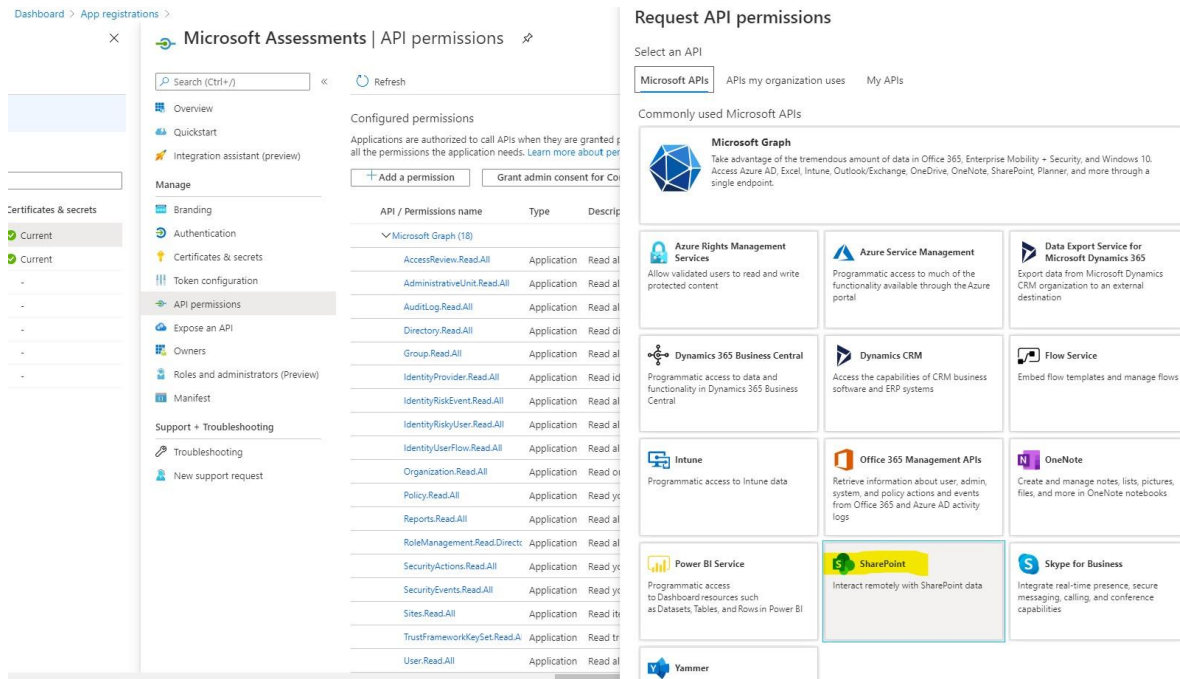
New support request

Configured permissions

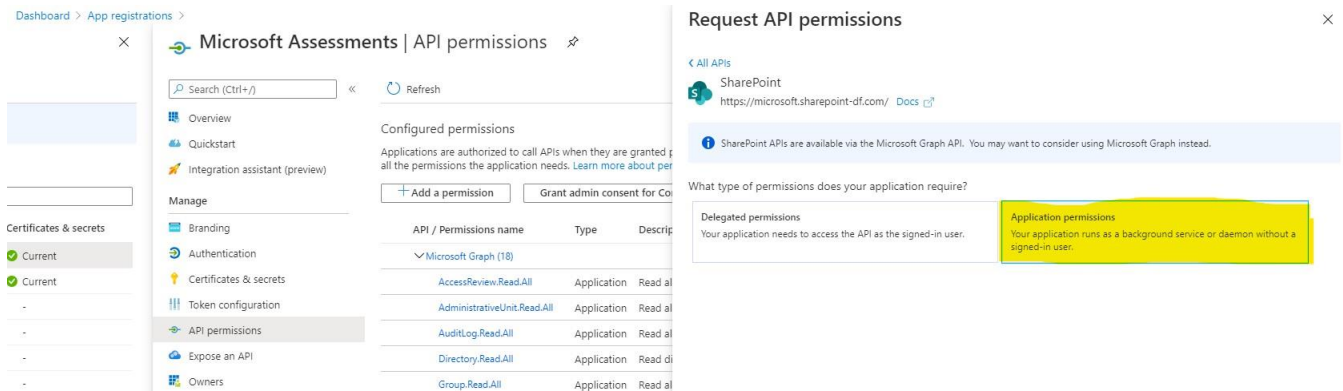
Applications are authorized to call APIs when they are granted permissions by users/admins as part of the consent process. The list of configured permissions should include all the permissions the application needs. [Learn more about permissions and consent](#)

[+ Add a permission](#) [Grant admin consent for Contoso](#)

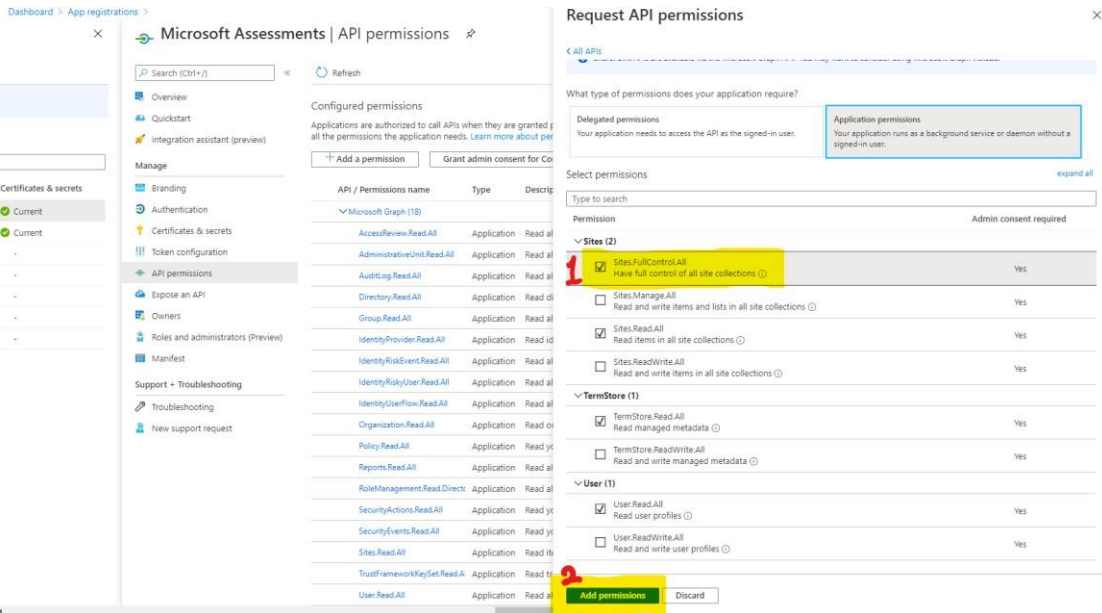
API / Permissions name	Type	Description	Admin consent req...	Status
▼ Microsoft Graph (18)				
AccessReview.Read.All	Application	Read all access reviews	Yes	Granted for Contoso
AdministrativeUnit.Read.All	Application	Read all administrative units	Yes	Granted for Contoso
AuditLog.Read.All	Application	Read all audit log data	Yes	Granted for Contoso
Directory.Read.All	Application	Read directory data	Yes	Granted for Contoso
Group.Read.All	Application	Read all groups	Yes	Granted for Contoso
IdentityProvider.Read.All	Application	Read identity providers	Yes	Granted for Contoso
IdentityRiskEvent.Read.All	Application	Read all identity risk event information	Yes	Granted for Contoso
IdentityRiskyUser.Read.All	Application	Read all identity risky user information	Yes	Granted for Contoso
IdentityUserFlow.Read.All	Application	Read all identity user flows	Yes	Granted for Contoso
Organization.Read.All	Application	Read organization information	Yes	Granted for Contoso
Policy.Read.All	Application	Read your organization's policies	Yes	Granted for Contoso
Reports.Read.All	Application	Read all usage reports	Yes	Granted for Contoso
RoleManagement.Read.Directory	Application	Read all directory RBAC settings	Yes	Granted for Contoso
SecurityActions.Read.All	Application	Read your organization's security actions	Yes	Granted for Contoso
SecurityEvents.Read.All	Application	Read your organization's security events	Yes	Granted for Contoso
Sites.Read.All	Application	Read items in all site collections (preview)	Yes	Granted for Contoso
TrustFrameworkKeySet.Read.All	Application	Read trust framework key sets	Yes	Granted for Contoso
User.Read.All	Application	Read all users' full profiles	Yes	Granted for Contoso



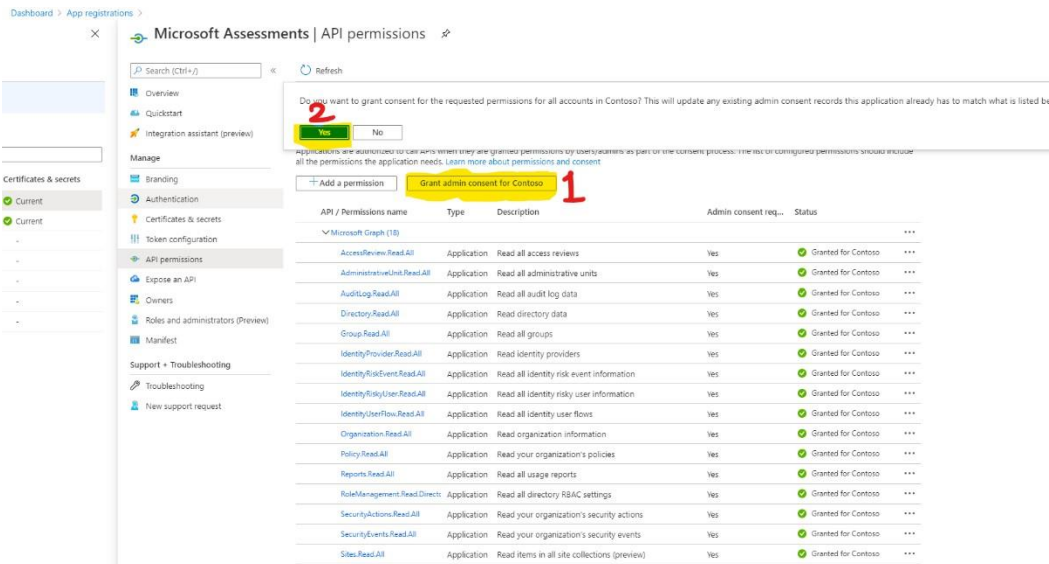
4. Select **"Application permissions"** for the type of permissions, this should open bottom part with list of permissions to select.



5. Select **"Sites.FullControl.All"** option and click on the "Add permissions" button on the bottom. You should receive notification that updating permissions.



6. Since this permission requires Admin consent, scroll to the top of the screen, and click the **“Grant admin consent”** button on the middle. Ensure to click the confirmation prompt **“Yes”** for granting admin consent.



7. If you need to remove this permission after the assessment run is complete, you can certainly remove it, but any later runs will not report classic workflows.
8. To revoke admin consent **“Sites.FullControl.All”** permissions, within API permissions, scroll to bottom under SharePoint category of permissions, select the ellipsis(...) on the right corresponding to **“Sites.FullControl.All”** and click **“Revoke admin consent”** and confirm prompt **“Yes, remove”**.

Dashboard > App registrations > Microsoft Assessments | API permissions

Search (Ctrl+/) Refresh

Overview
Quickstart
Integration assistant (preview)

Manage
Branding
Authentication
Certificates & secrets
Token configuration
API permissions
Expose an API
Owners
Roles and administrators (Preview)
Manifest
Support + Troubleshooting
Troubleshooting
View support request

Successfully granted admin consent for the requested permissions.

Permission	Application	Description	Consent	Status	Actions
AdministrativeUnit.Read.All	Application	Read all administrative units	Yes	Granted for Contoso	...
AuditLog.Read.All	Application	Read all audit log data	Yes	Granted for Contoso	...
Directory.Read.All	Application	Read directory data	Yes	Granted for Contoso	...
Group.Read.All	Application	Read all groups	Yes	Granted for Contoso	...
IdentityProvider.Read.All	Application	Read identity providers	Yes	Granted for Contoso	...
IdentityRiskEvent.Read.All	Application	Read all identity risk event information	Yes	Granted for Contoso	...
IdentityRiskyUser.Read.All	Application	Read all identity risky user information	Yes	Granted for Contoso	...
IdentityUserFlow.Read.All	Application	Read all identity user flows	Yes	Granted for Contoso	...
Organization.Read.All	Application	Read organization information	Yes	Granted for Contoso	...
Policy.Read.All	Application	Read your organization's policies	Yes	Granted for Contoso	...
Reports.Read.All	Application	Read all usage reports	Yes	Granted for Contoso	...
RoleManagement.Read.Directory	Application	Read all directory RBAC settings	Yes	Granted for Contoso	...
SecurityActions.Read.All	Application	Read your organization's security actions	Yes	Granted for Contoso	...
SecurityEvents.Read.All	Application	Read your organization's security events	Yes	Granted for Contoso	...
Sites.Read.All	Application	Read items in all site collections (preview)	Yes	Granted for Contoso	...
TrustFrameworkKeySet.Read.All	Application	Read trust framework key sets	Yes	Granted for Contoso	...
User.Read.All	Application	Read all users' full profiles	Yes	Granted for Contoso	...
▼ SharePoint (4)					
Sites.FullControl.All	Application	Have full control of all site collections	Yes	Granted for Contoso	Remove permission
Sites.Read.All	Application	Read items in all site collections	Yes	Granted for Contoso	Revoke admin consent
TermStore.Read.All	Application	Read managed metadata	Yes	Granted for Contoso	...
User.Read.All	Application	Read user profiles	Yes	Granted for Contoso	...

Microsoft Assessments | API permissions

Search (Ctrl+/) Refresh

Overview
Quickstart
Integration assistant (preview)

Manage

Revoke admin consent

Are you sure you want to revoke admin consent for Office 365 SharePoint Online – Sites.FullControl.All for Microsoft Assessments?

Yes, remove Cancel

Directory.Read.All Application Read directory data Yes Granted for Contoso

9. To remove "Sites.FullControl.All" permissions, within API permissions, scroll to bottom under SharePoint category of permissions, select the ellipsis(...) on the right corresponding to "Sites.FullControl.All" and click "Remove permission" and confirm prompt "Yes, remove".

Microsoft Assessments | API permissions

Search (Ctrl+/) Refresh

Overview
Quickstart
Integration assistant (preview)

Manage
Branding
Authentication
Certificates & secrets
Token configuration
API permissions
Expose an API
Owners
Roles and administrators (Preview)
Manifest
Support + Troubleshooting
Troubleshooting
New support request

Successfully granted admin consent for the requested permissions.

Permission	Application	Description	Consent	Status	Actions
AdministrativeUnit.Read.All	Application	Read all administrative units	Yes	Granted for Contoso	...
AuditLog.Read.All	Application	Read all audit log data	Yes	Granted for Contoso	...
Directory.Read.All	Application	Read directory data	Yes	Granted for Contoso	...
Group.Read.All	Application	Read all groups	Yes	Granted for Contoso	...
IdentityProvider.Read.All	Application	Read identity providers	Yes	Granted for Contoso	...
IdentityRiskEvent.Read.All	Application	Read all identity risk event information	Yes	Granted for Contoso	...
IdentityRiskyUser.Read.All	Application	Read all identity risky user information	Yes	Granted for Contoso	...
IdentityUserFlow.Read.All	Application	Read all identity user flows	Yes	Granted for Contoso	...
Organization.Read.All	Application	Read organization information	Yes	Granted for Contoso	...
Policy.Read.All	Application	Read your organization's policies	Yes	Granted for Contoso	...
Reports.Read.All	Application	Read all usage reports	Yes	Granted for Contoso	...
RoleManagement.Read.Directory	Application	Read all directory RBAC settings	Yes	Granted for Contoso	...
SecurityActions.Read.All	Application	Read your organization's security actions	Yes	Granted for Contoso	...
SecurityEvents.Read.All	Application	Read your organization's security events	Yes	Granted for Contoso	...
Sites.Read.All	Application	Read items in all site collections (preview)	Yes	Granted for Contoso	...
TrustFrameworkKeySet.Read.All	Application	Read trust framework key sets	Yes	Granted for Contoso	...
User.Read.All	Application	Read all users' full profiles	Yes	Granted for Contoso	...
▼ SharePoint (4)					
Sites.FullControl.All	Application	Have full control of all site collections	Yes	Not granted for Contoso	Remove permission
Sites.Read.All	Application	Read items in all site collections	Yes	Granted for Contoso	...
TermStore.Read.All	Application	Read managed metadata	Yes	Granted for Contoso	...
User.Read.All	Application	Read user profiles	Yes	Granted for Contoso	...

Microsoft Assessments | API permissions

Search (Ctrl+/) Refresh

Overview
Quickstart
Integration assistant (preview)

Manage

Remove permission

Are you sure you want to remove Office 365 SharePoint Online – Sites.FullControl.All from the configured permissions for Microsoft Assessments?

Yes, remove Cancel

SharePoint (3)						...
Sites.Read.All	Application	Read items in all site collections	Yes	✔	Granted for Contoso	...
TermStore.Read.All	Application	Read managed metadata	Yes	✔	Granted for Contoso	...
User.Read.All	Application	Read user profiles	Yes	✔	Granted for Contoso	...

10. Ensure final permissions of the SharePoint category looks like the above permissions list after revoking and removing **"Sites.FullControl.All"** permission.

Install Prerequisite Cmdlets

The Azure AD Preview Module is supported on the following Windows operating systems with the default version of Microsoft .NET Framework and Windows PowerShell: Windows 8.1, Windows 8, Windows 7, Windows Server 2012 R2, Windows Server 2012, or Windows Server 2008 R2.

If your computer has all the prerequisites for the installation, the module can be installed with the InstallModule cmdlet via PowerShell 5.0 or greater while Run as Administrator:

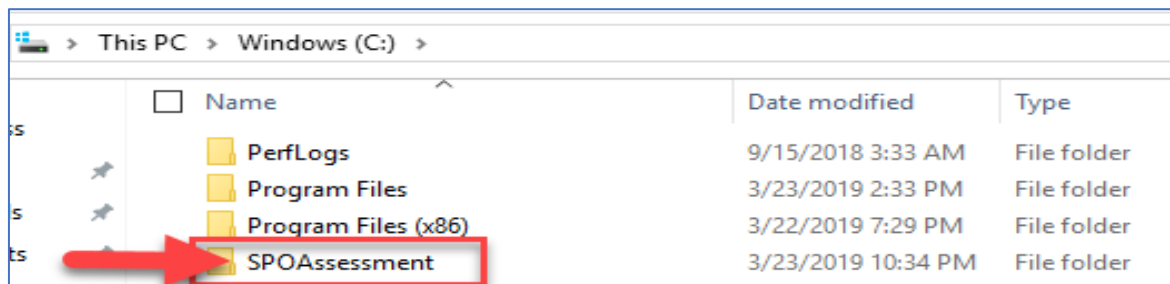
```
Set-ExecutionPolicy -ExecutionPolicy RemoteSigned
Install-Module MSOnline
Install-Module Microsoft.Graph
Install-Module -Name Microsoft.Online.SharePoint.PowerShell -AllowClobber -Force
Uninstall-Module SharePointPnPPowerShellOnline -Force -AllVersions
Install-Module PnP.PowerShell -AllowClobber -Force
```

```
Import-Module MSOnline -Verbose
Import-Module Microsoft.Graph -Verbose
Import-Module PnP.PowerShell -Verbose
Import-Module Microsoft.Online.SharePoint.PowerShell -Verbose
```

Setting up the SharePoint Online Assessment

On the designated data collection machine, complete the following:

1. Create the working directory for the Assessment data. i.e. C:\SPOAssessment



2. Open the Windows PowerShell command prompt as an Administrator



3. Run the following command:
 - o Where **<Directory>** is the path to an existing directory used to store the files created while collecting and analyzing the data from the environment.

`Add-SharePointOnlineAssessmentTask -WorkingDirectory <Directory>`

Example:

Add-SharePointOnlineAssessmentTask -WorkingDirectory "C:\SPOOA"

```
PS C:\windows\system32> Add-SharePointOnlineAssessmentTask -WorkingDirectory "C:\SPOOA"

cmdlet Add-SharePointOnlineAssessmentTask at command pipeline position 1
Supply values for the following parameters:
(Type !? for Help.)
ScheduledTaskUsername: Administrator
ScheduledTaskPassword: *****
[SharePointOnlineAssessment]Performing Credentials Validation
[SharePointOnlineAssessment]Detected agent configuration for Management Group AOI-b88c58fa-f16f-4bdc-adc4-829bb231f1ea
[SharePointOnlineAssessment][2812]To start an SharePointOnlineAssessment the Administrator user must have the 'Log on as a batch job' right. Please verify using Local Security Policy manager.

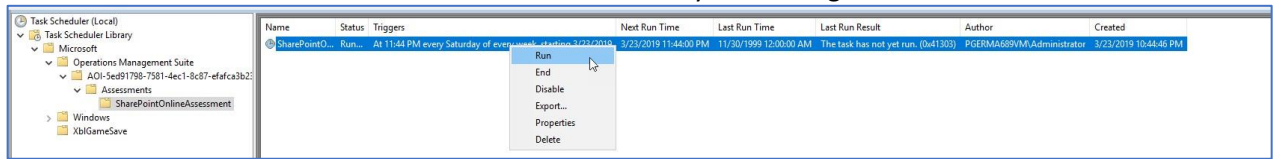
[SharePointOnlineAssessment]Creating Windows Schedule task to run assessment...
[SharePointOnlineAssessment]Task Creation Successful
[SharePointOnlineAssessment]SharePointOnlineAssessment setup successful.
[SharePointOnlineAssessment]Detailed log is at: C:\Users\Administrator\AppData\Local\Temp\Assessments_Configuration_20191008_041053.log
[SharePointOnlineAssessment][2804]To receive continued assessment updates, please close this Powershell window
```

4. You will be promoted to enter an account that will be able to run a scheduled task on the Tools machine. Supply the required user account credentials to tun the Scheduled Task. These credentials are used to run the SharePoint Online Assessment.

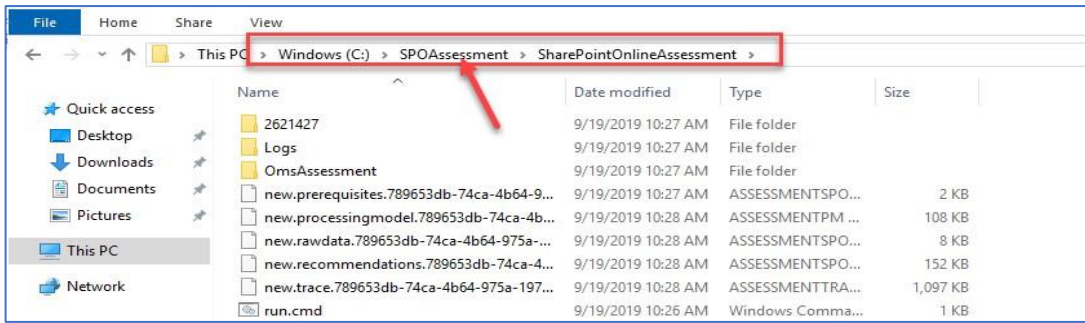
Note:

1. *The account used to setup the assessment task needs to be a local admin in the Tool Machine, it can a local account or a Domain account with full admin right on the Tool Machine. if using local account just enter the account name and password, if using a domain account use the format Domain\Account.*
2. *Ensure that when setting up the assessment task, the account that will be used to run the scheduled task is the account that is used to log in and setup the assessment task.*

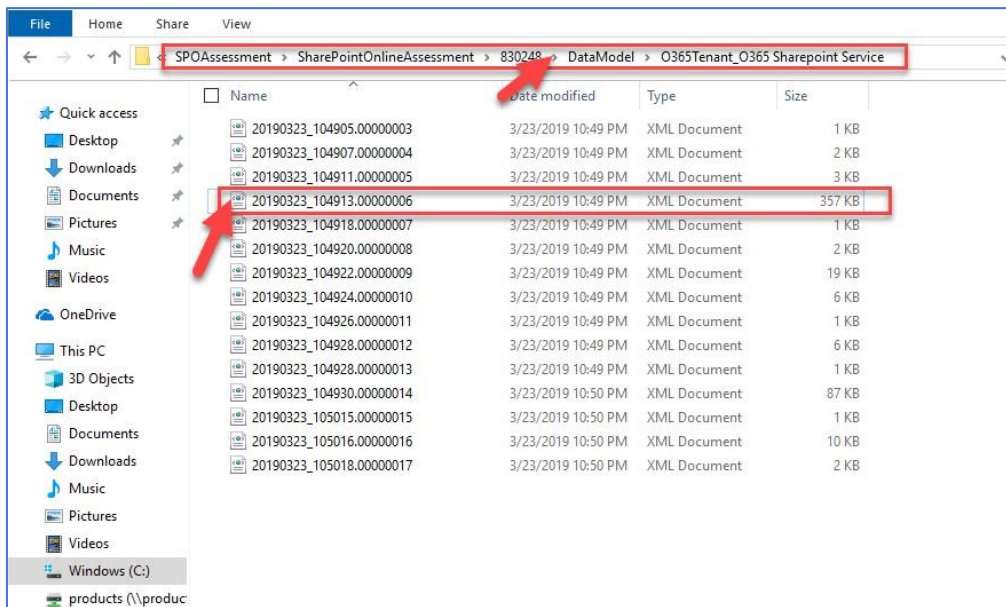
5. The script will continue with the necessary configuration. It will create a scheduled task that will trigger the data collection.
6. Data collection is triggered by the **scheduled task** named **SharePointOnlineAssessment** within an hour of running the previous script and then every 7 days. The task can be changed to run on a different date/time or even forced to run at once.
7. You can confirm the Task is created in **Task Scheduler** and you can “Right Click” on the Task to **Run** it.



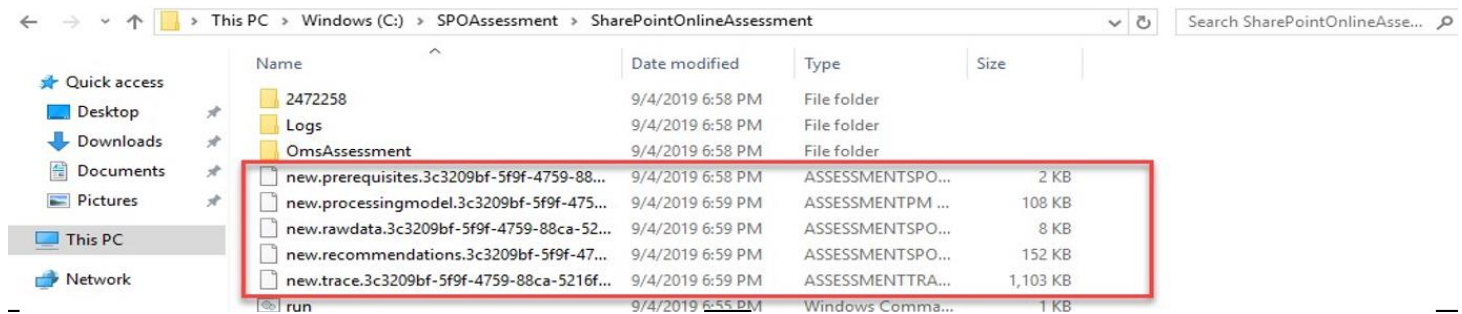
8. During collection and analysis, data is temporarily stored under the **WorkingDirectory** folder that was configured during setup, using the following structure:



9. After the completion of the task, you can Verify the XML files are created under the DataModel folder,

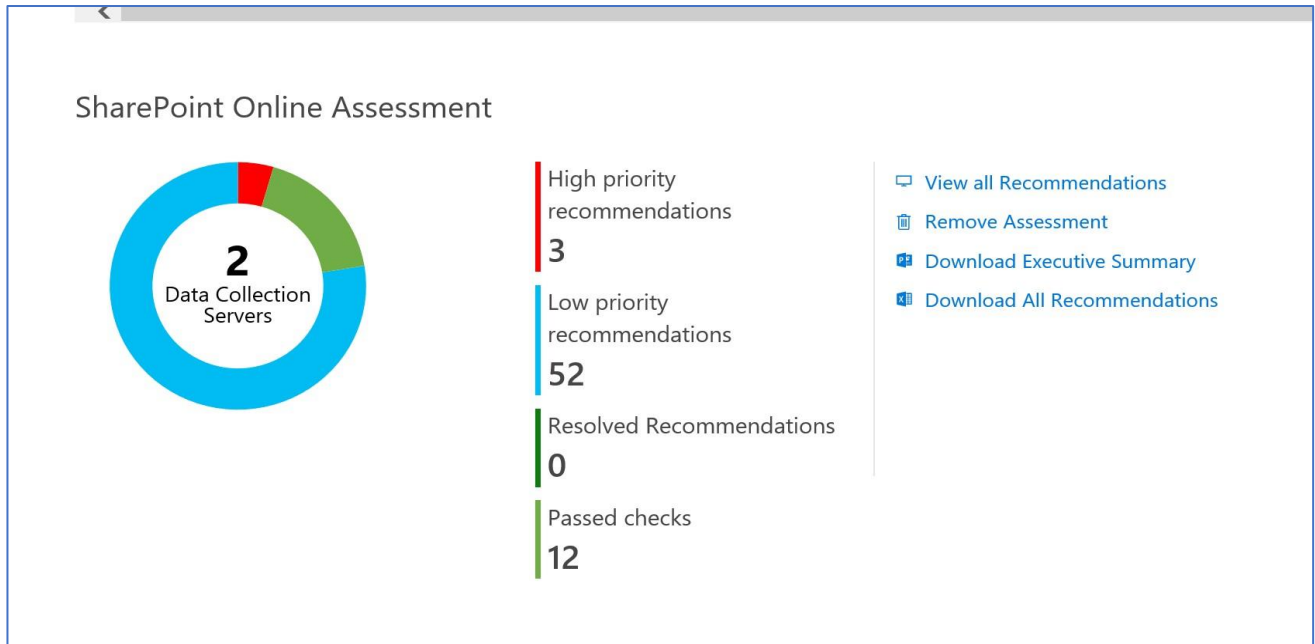


10. You will notice under the **SharePointAssessment** folder a file with prefix of “new”



11. After data collection and analysis is completed on the tools machine, it will be submitted to your Azure Log Analytics Workbooks.

12. Your assessment results will be available to view on your **Service hub** Dashboard. Click the **SharePoint Online Assessment** and click on “View All Recommendations” to review:



13. You will then be presented with findings grouped by the focus area.

Prioritized Recommendations

Recommendation	FocusArea
Review why Active Directory Forest Discovery is disabled	Upgrade&comm& Migration and Deplo
Review the implementation of proper antivirus exclusions	Upgrade&comm& Migration and Deplo
Review why Active Directory Forest Discovery is disabled	Upgrade, Migration and Deployment
Review the implementation of proper antivirus exclusions	Upgrade, Migration and Deployment
Set Max Server Memory for SQL Server to an appropriate ...	Performance and Scalability
Set Max Server Memory for SQL Server to an appropriate ...	Performance and Scalability
Consider enabling Azure Monitor base monitoring.	Operations and Monitoring
Consider enabling Azure Monitor base monitoring.	Operations and Monitoring
Investigate why no Distribution Point Groups are found in...	Upgrade&comm& Migration and Deplo
Investigate why a maintenance task has failed to complet...	Operations and Monitoring
Reconfigure the Max server memory setting appropriatel...	Upgrade&comm& Migration and Deplo

Upgrade&comm& Migration and Deployment

Low Priority Recommendations
32

Appendix

Data Collection Methods

The **Office 365 SharePoint Assessment** uses multiple data collection methods to collect information from your environment. This section describes the methods used to collect data from your environment. No Microsoft Visual Basic (VB) scripts are used to collect data.

Data collection uses workflows and collectors. The collectors are:

1. Microsoft Graph API
2. Microsoft PowerShell
3. SharePoint Modernization Scanner

Microsoft Graph API

The Microsoft Graph API is used to get data pertaining to Office 365 Secure Score.

Microsoft PowerShell

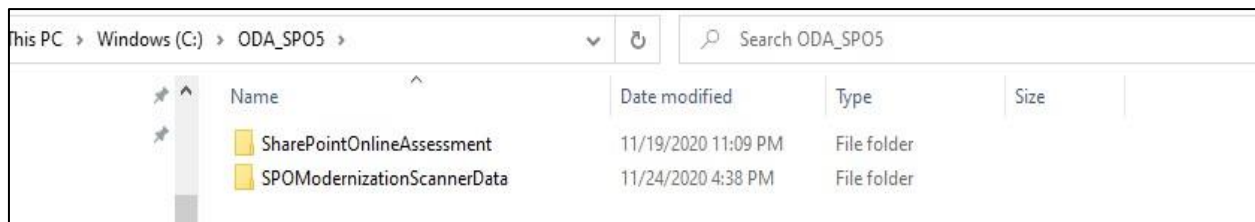
PowerShell is used to collect data from both Azure AD and Office 365. PowerShell uses the cmdlets from Azure PowerShell, SharePoint Management Shell and Patterns and Practices PnP) cmdlets to connect to and pull the required configuration settings pertaining to the tenant.

SharePoint Modernization Scanner

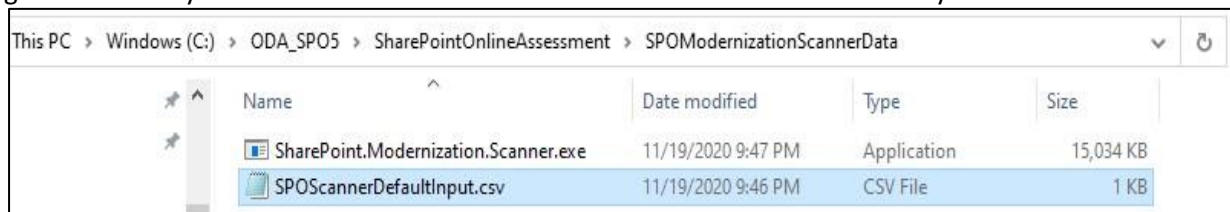
SharePoint Modernization Scanner under the covers uses SharePoint Online CSOM to collect site level configurations which will be used for analysis and recommendation towards modernizing the sites. By default, the scanner collects data only from classic sites on the tenant. If you have a need to report more than just classic sites, you can configure custom csv input file with list of site URLs for the scanner to collect data from.

Setting up Custom Input File for the scanner (Optional):

- By default, when you run the OnDemand Assessment first time, this will create a “SPOModernizationScannerData” folder under working directory (e.g.: C:\ODA_SPO5) you configured for SharePoint Online Assessment task creation under the scheduler. In the example below, “C:\ODA_SPO5” is the working directory for SharePoint Online Assessment.

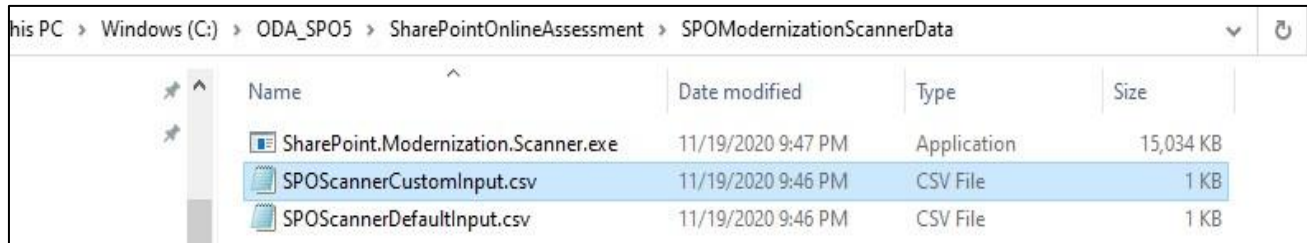


- Inside the “SPOModernizationScannerData” folder, you will see that “SPOScannerDefaultInput.csv” file is generated every time when data collection starts from Task Scheduler manually or as scheduled.

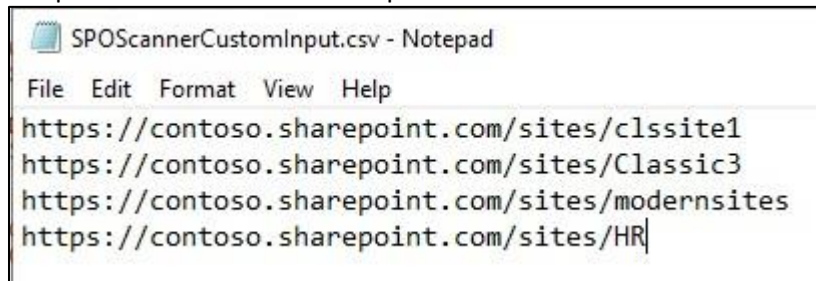


- SPOScannerDefaultInput.csv contains classic site URLs within the tenant. This will be used by the SharePoint Modernization Scanner tool by default for scanning.

- If you wish to change to different list of sites to scan, you can make a copy of the SPOScannerDefaultInput.csv or create your own file with list of URLs with the name: SPOScannerCustomInput.csv like the following:



- If you want your assessment to start the first time with custom list of sites for scanner to use, you will have to create the “SPOModernizationScannerData” folder manually and place the custom csv file with filename you see on the previous step as SPOScannerCustomInput.csv.
- Sample of SPOScannerCustomInput.csv files will look like the following:



Office 365 Assessment – Authentication Model

The Office 365 Assessment collects data using 2 methods:

1. Microsoft Graph
2. PowerShell Cmdlets
3. SharePoint Modernization Scanner

Graph API

The assessment connects to and extracts data form Microsoft Graph using an App created in Azure. The App is granted read permissions using OAuth. The data collection machine will have a certificate which is used to connect to the Azure App, which in turns gets the data from Microsoft Graph.

During the setup of the assessment, a Global Admin is required in order to create the App and grant it the relevant Read permissions so that it can query Microsoft Graph.

Once the setup is completed this part of the assessment will collect data with the App via the certificate with no account requirement. The App has only read access, which helps collect data using a least privileged model.

PowerShell Cmdlets

The assessment also collects data from Office 365 using the following cmdlets:

- Azure AD cmdlets
- SharePoint Online cmdlets
- SharePoint Online PnP cmdlets

Whilst these cmdlets currently support modern authentication to login, they are designed to run manually. This means the support of Modern Authentication is handled for accounts with MFA by a prompt to handle the authentication.

The assessment collects the data in an automated manner via a scheduled task. As this data collection is designed to run autonomously no prompts are generated. This causes an issue with account having MFA enabled, as when authenticating the account prompt for MFA does not appear and thus account cannot authenticate.

We are currently working with the PG on cmdlets that will support OAuth. With cmdlets that fully support OAuth we can use the Azure App to authenticate the requests made from the cmdlets. In doing so this will remove the requirement to use a Global Admin account, as well as the current requirement to use an account that does not have MFA.

SharePoint Modernization Scanner

SharePoint Modernization Scanner tool uses Azure AD App based authentication using OAuth authentication mechanism. As mentioned previously, SPO Scanner will by default will use only Sites.Read.All API permissions of Azure AD App for collection. Optionally, if you need to collect workflow related data, you will need to provide the Azure AD App, Sites.FullControl.All.

SharePoint Modernization Scanner will also be downloaded automatically using .NET web client when assessment is run the first time. After the first time run, the scanner version check will happen every time the assessment is run. Scanner check will ensure to check the version and download the latest only if the current version is not latest.

Download is performed the [GitHub repository](#) of the SharePoint Modernization Scanner. As you can see, we use only https endpoints for the downloads and on top of that we also ensure the SHA512 bit checksum matches to ensure data integrity and security.

View Prerequisite Errors

You can check the event viewer to view errors pertaining to prerequisites.

The screenshot shows the Windows Event Viewer interface. The left pane displays the tree view with 'Microsoft > AppV > Assessments > Prerequisites > Operational' selected. The main pane shows a list of 9 events. Below the list, a detailed view for 'Event 1100, Prerequisites' is shown, displaying 'Prerequisite success rate: 100.0%'.

Level	Date and Time	Source	Event ID	Task Category
Information	3/2/2019 4:32:54 AM	Prerequisites	1100	SuccessRate_Success
Information	3/2/2019 4:32:44 AM	Prerequisites	1200	MVE_Success
Error	3/2/2019 2:18:22 AM	Prerequisites	1101	SuccessRate_Failed
Information	3/2/2019 2:18:08 AM	Prerequisites	1200	MVE_Success
Error	3/1/2019 8:30:00 AM	Prerequisites	1101	SuccessRate_Failed
Information	3/1/2019 8:29:50 AM	Prerequisites	1200	MVE_Success
Error	3/1/2019 7:34:26 AM	Prerequisites	1101	SuccessRate_Failed
Information	3/1/2019 7:34:12 AM	Prerequisites	1200	MVE_Success
Error	3/1/2019 7:30:25 AM	Prerequisites	1201	MVE_Failed